

## Crush Resistant Reinforced Brewery Hose

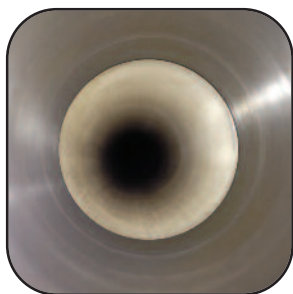
Assembled & ready to ship in 10', 20', 25' and 50' lengths (non-stock lengths upon request)

- Crush resistant; rebounds to its original shape after impact
- Ultra smooth, white, chlorobutyl rubber liner offers high purity; minimizes bacterial entrapment and flavor contamination
- Microbe-resistant liner is built on stainless steel mandrels for cleanliness and will not impart taste or odor
- General temperature range: -40°F to 240°F
- Multi-layered and reinforced with a monofilament polymer helix
- Hose meets FDA, USDA and Canadian Food Inspection Agency (file: N267) standards
- Butyl compound used conforms to 3-A Sanitary Standards for #18-03
- Free of PVC, phthalates and animal-derived ingredients
- REACH compliant
- 316 Stainless Steel Tri-Clamp® fittings engineered specifically for butyl hose



PART NO.	ID (IN.)	OD (IN.)	STANDARD LENGTHS (FT.)	BEND RADIUS (IN.)	LBS. PER FT.	WORKING PRESSURE AT 70°F (PSI)	VACUUM RATING (IN./HG)
452 1000	1	1.64	10, 20, 25, 50	3.5	0.44	250	29.9
452 1500	1-1/2	2.14	10, 20, 25, 50	4.5	0.63	250	29.9
452 2000	2	2.77	10, 20, 25, 50	7	1.21	250	29.9

### BrewSavor® Crimp Technology



BrewSavor  
Smooth Bore



In-service  
competitor's hose  
assembly

With our extensive knowledge learned from the pharmaceutical industry, our hose assembly crimp technology offers smooth hose-to-fitting transitions, eliminating voids where beer spoiling bacteria can lurk and grow.



# About BrewSavor®



BrewSavor is a brand established by NewAge® Industries, an employee-owned company in business since 1954. Our Brew Crew is dedicated to manufacturing innovative fluid transfer tubing and hose products that exceed expectations of both craft brewers and home brewers alike.

We are equally committed to sustainability and have taken significant steps towards becoming a green company with our roof top solar array and numerous other green initiatives.

BrewSavor is devoted to quality and we understand the importance of flavor consistency when it comes to your brew.

Let us help you taste your vision.



## Other BrewSavor Fluid Transfer Options



### Kink Resistant Reinforced Brewery Hose

- Tighter bend radius; more resistant to kinking
- Assembled and ready to ship in 10' and 20' lengths



### Antimicrobial Clearflo® Ag-47 Tubing

- Defends against beer spoilers
- Protection on both the inside and outside throughout the life of the tubing
- Free of phthalates



### High Temperature & Low Temperature Tubing & Hose

- Perfect for brewing, dispensing, mash vessels, site tubes, brew kettles and hot liquor tanks
- Free of phthalates

**ESOP** Employee Owned  
for Your Benefit



145 James Way  
Southampton, PA 18966  
[www.brewsavor.com](http://www.brewsavor.com)

Phone: 888-777-0147  
215-526-2300  
Fax: 800-837-1856  
215-526-2190  
[info@brewsavor.com](mailto:info@brewsavor.com)

BrewSavor, "Taste Your Vision," NewAge and Clearflo are registered trademarks of NewAge® Industries, Inc. Tri-Clamp® is a registered trademark of Alfa Laval Inc.  
WARRANTY: NewAge Industries' products are warranted to be free from defects in material and workmanship. Any product found to carry such defects will be replaced without charge. This warranty is limited only to the replacement of NewAge Industries' products, item for item, which after examination by NewAge Industries are deemed defective. NewAge Industries specifically disclaims any other liability. The data supplied is provided as a helpful guideline and is believed to be reliable; however, nothing stated shall constitute a guarantee, recommendation, or warranty for any application.

NOTICE: NewAge Industries, Inc. has been a privately owned corporation since 1954. Neither the corporation nor its principals are affiliated, in any way, with any other group or entity either representing themselves as or being referred to by the term New-Age.

© NewAge Industries, Inc. 2019 Specifications are subject to change without notice.

12/18/19